

**26th International Multidisciplinary Conference
Reliability and Statistics in Transportation and Communication:
Ecosystems for Smart Connectivity and Intelligent Mobility
(RelStat-2026)**

15 - 17 October 2026, Riga, Latvia

VENUE

Host: Transport and Telecommunication Institute (TSI)
Lauvas Street 2, LV-1019, Riga, LATVIA

Contact person:

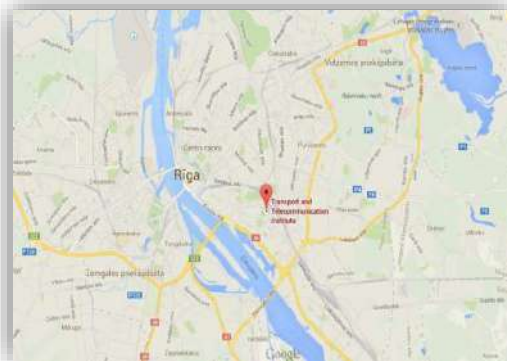
Jelena Rutkovska – Conference Coordinator

Phone: +371 67100586, +371 29409025

rutkovska.j@tsi.lv, <https://tsi.lv/>

By public transport (15 minutes from City Centre to venue):

- by trolley-bus No. **15** or bus No. **18** to **Lauvas iela** stop (just across the street)
- by tram No. **7** to **Latgales parks** stop (within a 6-minute walking distance)



How to get to Riga City Centre from Riga International Airport

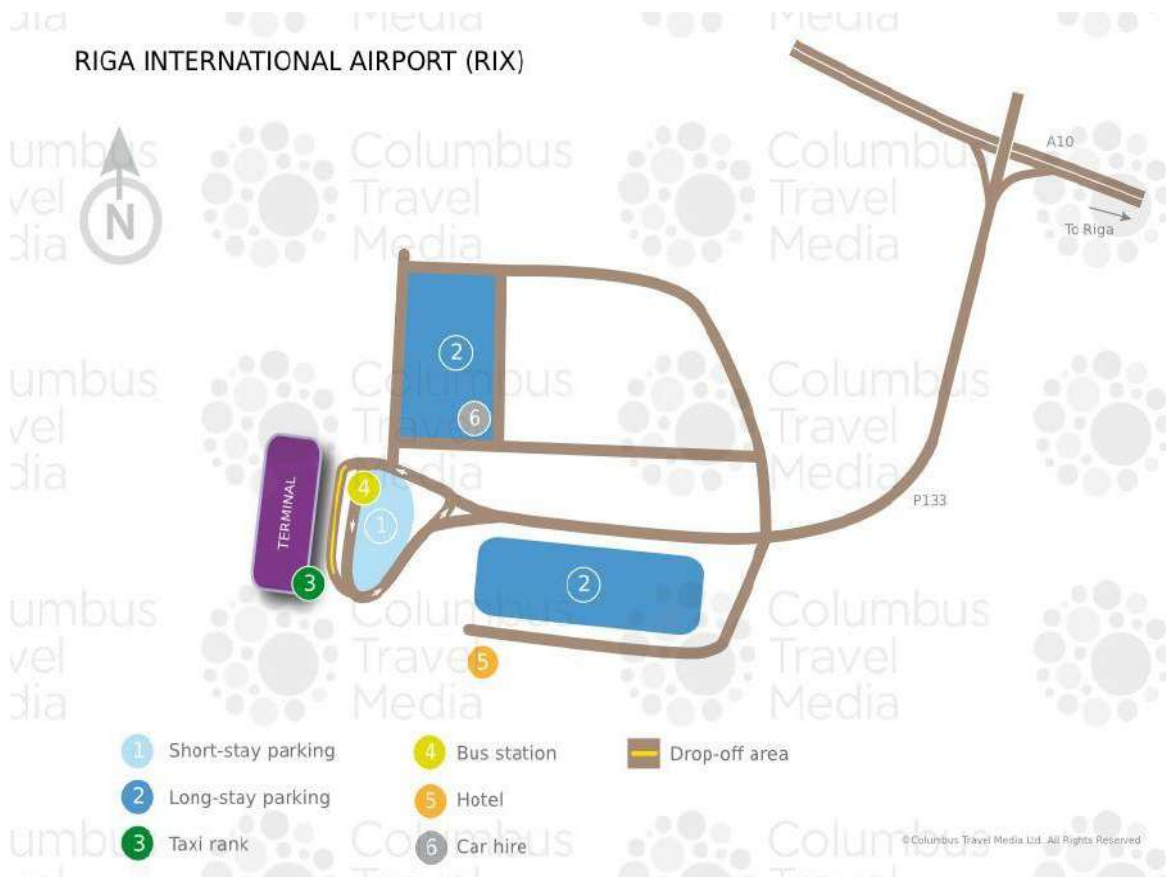
BY PUBLIC TRANSPORT

See a map and follow the public transport signs!

BUS NO. 22



RIGA INTERNATIONAL AIRPORT (RIX)



Stops in Riga City Centre from Riga Airport:

- Grēcinieku iela
- Autoosta
- Centrāltirgus
- Abrenes iela

Stops in Riga City Centre to Riga Airport:

- Abrenes iela
- Centrālā stacija
- 13. janvāra iela
- Grēcinieku iela





TICKET PRICE

90-minute ticket EUR 1,50 (all routes)
Two 90-minute tickets EUR 3,00 (all routes)
24-hour ticket EUR 5,00 (all routes)
3-day ticket EUR 8,00 (all routes)
5-day ticket EUR 10,00 (all routes)



PURCHASING TICKETS

Tickets can be purchased at the Airport's Information Office (Arrivals E), "Narvesen" shops (on the 1st and 2nd floor) and ticket vending machine at the bus stop.

Bus route No. 22 is the only route, where the ticket can also be bought from the bus driver. Payment for the ticket is with a **bank payment card only, ticket price - 2€**. On bus route No. 22, it is also possible to use the other types of tickets available in advance sale outlets, and to use the travel fare reliefs.

ROUTES AND SCHEDULES



At the public transport stops or [here](#)

TAXI SERVICE

A taxi licensed to work at Riga Airport ensuring high quality of services and transparent pricing policy can be hired on the carriageway, which is located immediately at the exit from the arrivals terminal. Other taxi carriers also provide services in the Airport area; it is also possible to hire a taxi using one of the mobile applications.

A ride from the Airport to the City Centre, depending on the traffic intensity, takes an average of 20-25 minutes and costs approximately €18–35.

Ride Fare

You can pay for a taxi ride after the ride according to the tariff set by the carrier. The fare consists of a boarding fee, a distance fee and a travel time fee. Carriers' tariffs are available [here](#).

Rates

Please note!

Information on taxi associations that have been issued licenses to work at Riga Airport and their fares can be found [here](#). The fare for a ride to the city centre is the same for all taxis of the respective brand.

Fares of other taxis may be different and there is no maximum limit, therefore we recommend that you clarify the price of the ride before hiring.



ACCOMMODATION

Please be informed that starting from 01.01.2023. the council has confirmed City Tax – EUR 1.00 per adult (18+) and night.

The City Tax is not included in the room price and shall be paid on the spot upon arrival

For help with sourcing accommodation, please, find below special offers for the conference dates.

RADISSON BLU RIDZENE HOTEL ****

Reimersa Street 1, Riga, Latvia

Phone: +371 67061217

E-mail: reservation.riga@radisson.com

For reservations use the following booking link

Special rate: Standard Single room: 85,00 EUR per room/night

Standard Twin room: 95,00 EUR per room/night

Booking promo code: RelStat



WELLTON RIVERSIDE SPA HOTEL ****

33, 11. novembra krastmala, Riga, Latvia

Phone: +371 66777862

<https://www.wellton.com/en/hotels/wellton-riverside-spa-hotel>

Special rate: 10% discount (breakfast and VAT included)

For reservations use <https://www.wellton.com/en>

Promo code: RelStat



MERCURE RIGA CENTRE****

Elizabetes Street 101, Riga, Latvia

Phone: +371 67869900

<https://all.accor.com/hotel/9436/index.en.shtml>

Special rate: 65.00 EUR (Single room per night, breakfast and VAT)

75.00 EUR (Double/Twin room per night, breakfast and VAT)

Car parking 10 EUR / day

For reservations use booking@mercure-riga.lv

Booking promo code: RelStat26



AVALON HOTEL & Conferences ****

13th Janvara Street 19, Riga, Latvia

Phone: +371 67169999

www.hotelavalon.eu

Special rates (breakfast and VAT):

Standard single use room – EUR 60.00 per room night

Standard double use room – EUR 65.00 per room night

Superior single use room – EUR 75.00 per room night

Superior double use room – EUR 80.00 per room night

For reservations use www.hotelavalon.eu or reservations@hotelavalon.eu

Booking promo code: RelStat26



WELLTON RIGA HOTEL & SPA ****

Valņu Street 49, Riga, LV-1050, Latvia

Phone: +371 67869955

<https://www.wellton.com/en/hotels/wellton-riga-hotel-and-spa>

Special rate: 10% discount (breakfast and VAT included)

For reservations use <https://www.wellton.com/en>

Promo code: RelStat



WELLTON CENTRUM HOTEL & SPA ****

Kaleju Street 33, Riga, LV-1050, Latvia

Phone: +371 67130674

<https://www.wellton.com/en/hotels/wellton-centrum-hotel-and-spa>

Special rate: 10% discount (breakfast and VAT)

For reservations use <https://www.wellton.com/en>

Promo code: RelStat



RIXWELL OLD RIGA PALACE HOTEL ****

Minsterejas Street 8/10, Riga, LV-1050

Phone: +371 67559791

<https://www.rixwell.com/en/hotels/rixwell-old-riga-palace-hotel>

Special rate: 15% discount (breakfast and VAT included)

For reservations use <https://www.rixwell.com/en>

Promo code: RelStat



RIJA DOMUS HOTEL ***

Tirgoņu Street 9, Riga, LV-1050

Phone: +37167083101

<https://www.rijahotels.com/en/hotels/rija-domus-hotel>

Special rate: 15% discount (breakfast and VAT included)

Special rate: 18EUR for SPA Zone at Wellton SPA Centrum (within a 5-minute walking distance)

For reservations use <https://www.rijahotels.com/en>

Promo code: RelStat



RIXWELL ELEFANT HOTEL ** (the closest to Riga International Airport)**

Kalnciema Street 90, Riga, LV-1046

Phone: +37167083101

<https://www.rixwell.com/en/hotels/rixwell-elephant-hotel>

Special rate: 15% discount (breakfast and VAT included)

For reservations use <https://www.rixwell.com/en>

Promo code: RelStat



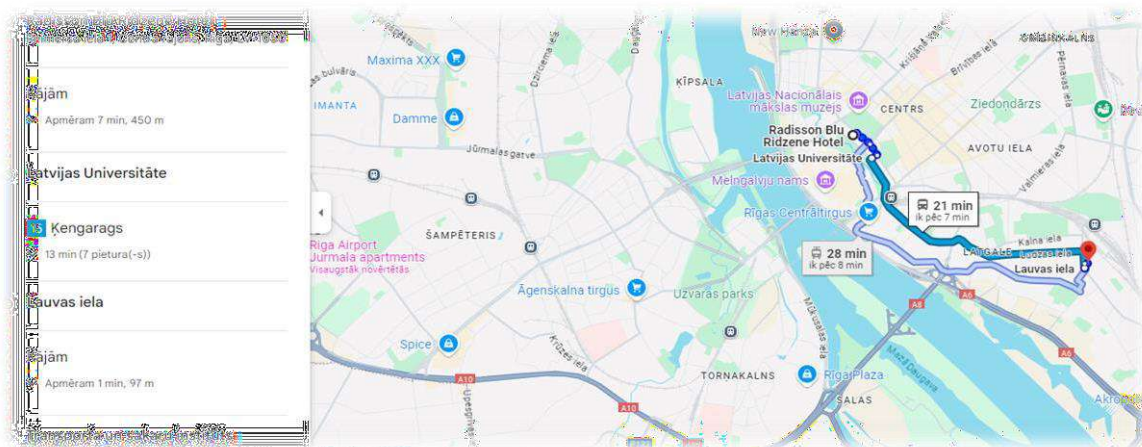
Other options: You can also do your own hotel booking via usual platforms, e.g. <http://www.booking.com>

How to get to venue from offered hotels

By public transport

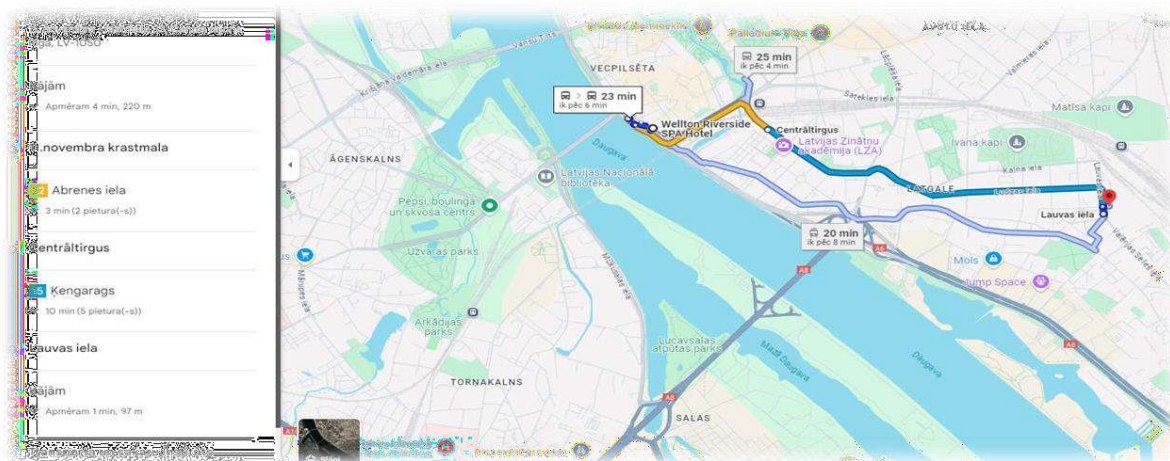
RADISSON BLU RIDZENE HOTEL

1. Approximately 7 minutes on foot from the hotel to the trolley-bus stop
2. Take trolley-bus **No.15** to Kengarags at **Latvijas Universitāte** stop to get to **Lauvas iela** stop
3. You just need to cross the street and you will reach the venue. (Please see the map below)



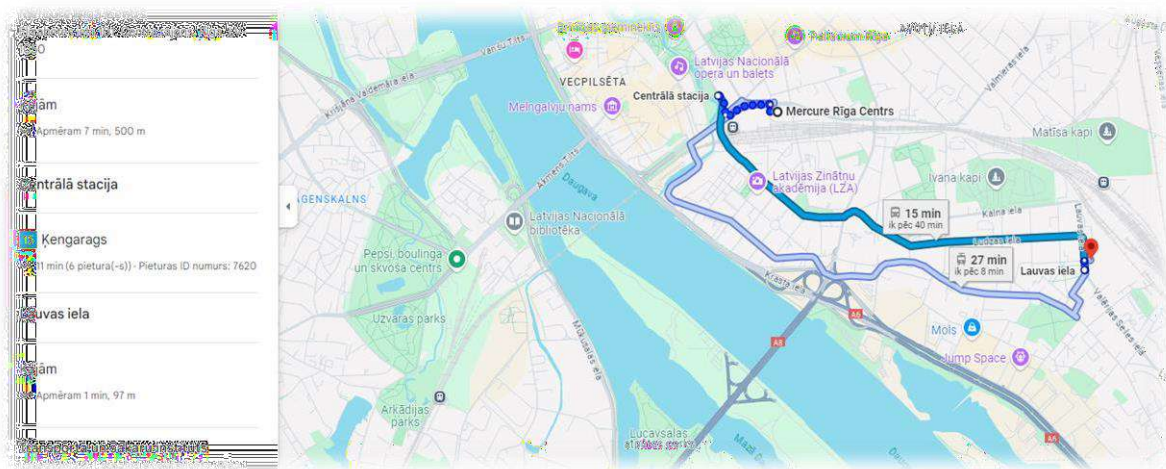
WELLTON RIVERSIDE SPA HOTEL

1. Approximately 3 minutes on foot from the hotel to the bus stop
2. Take buses **No. 22, 25, 55** to Abrenes iela at **11.novembra krastmala** stop to get to **Centrālirtigus** stop and here change to trolley-bus **No. 15** to Kengarags or bus **No.18** to Darzini to get to **Lauvas iela** stop
3. You just need to cross the street and you will reach the venue. (Please see the map below).

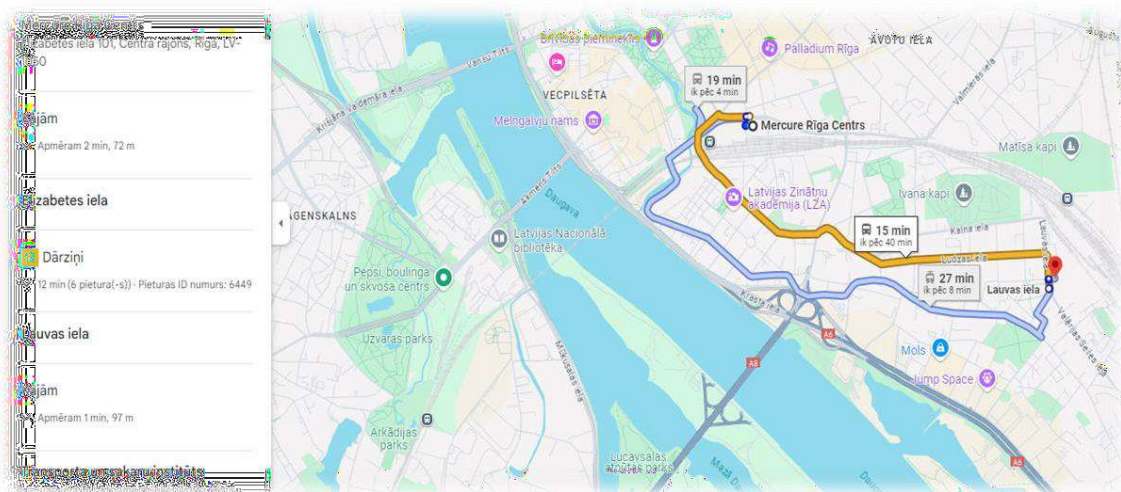


MERCURE RIGA CENTRE

1. Approximately 7 minutes on foot from the hotel to the trolley-bus stops
2. Take trolley-bus **No.15** to Kengarags at **Centrālā stacija** stop to get to **Lauvas iela** stop
3. You just need to cross the street and you will reach the venue. (Please see the map below).

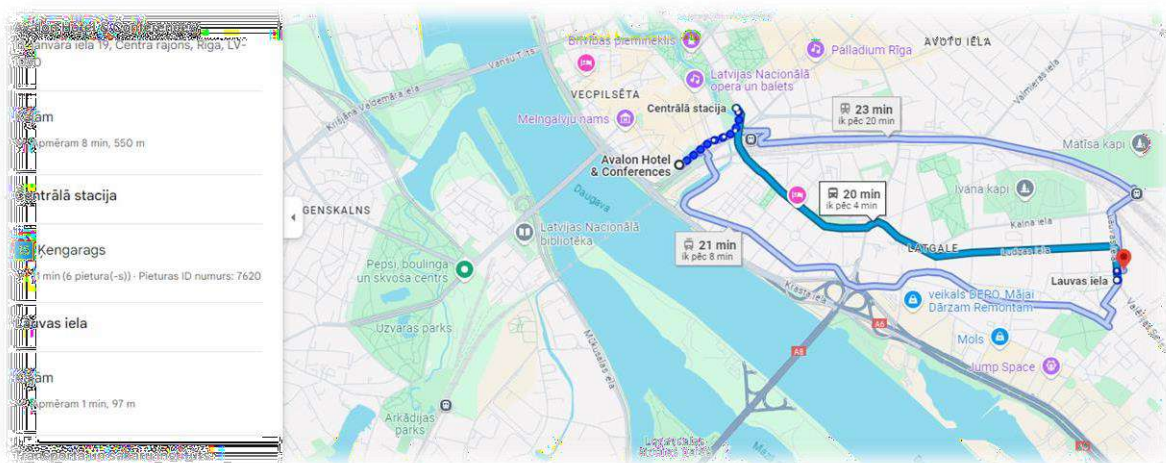


1. Approximately 2 minutes on foot from the hotel to the bus stop
2. Take bus **No. 18** to Darziņi at **Elizabetes iela** stop to get to **Lauvas iela** stop
3. You just need to cross the street and you will reach the venue. (Please see the map below).



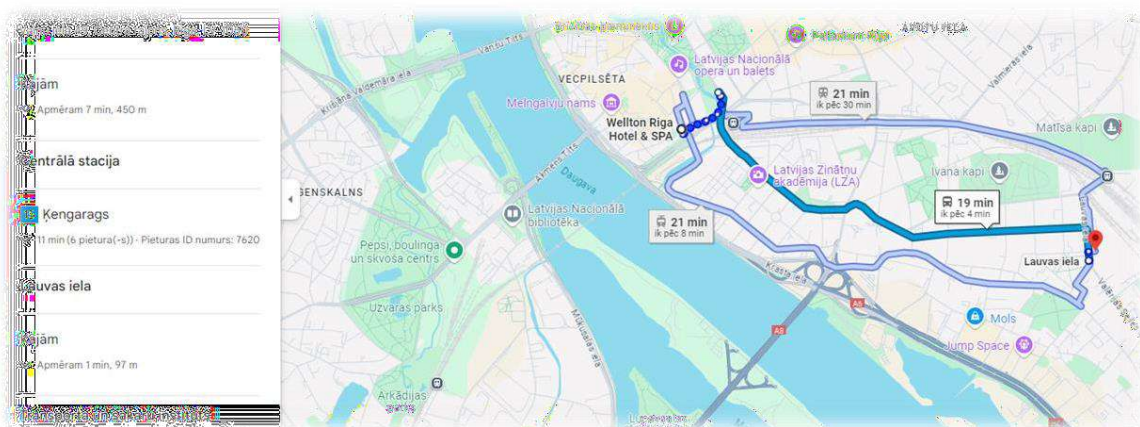
AVALON HOTEL & CONFERENCES

1. Approximately 8 minutes on foot from the hotel to the trolley-bus stop
2. Take trolley-bus **No.15** to Kengarags at **Centrālā stacija** stop to get to **Lauvas iela** stop
3. You just need to cross the street and you will reach the venue. (Please see the map below).



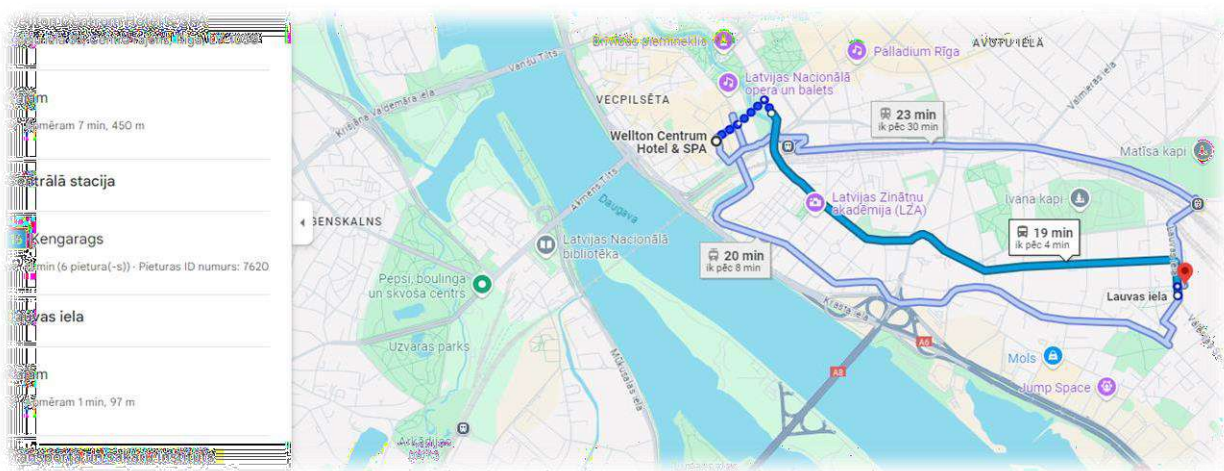
WELLTON RIGA HOTEL & SPA

1. Approximately 7 minutes on foot from the hotel to the trolley-bus stop
2. Take trolley-bus **No.15** to Kengarags at **Centrālā stacija** stop to get to **Lauvas iela** stop
3. You just need to cross the street and you will reach the venue. (Please see the map below).



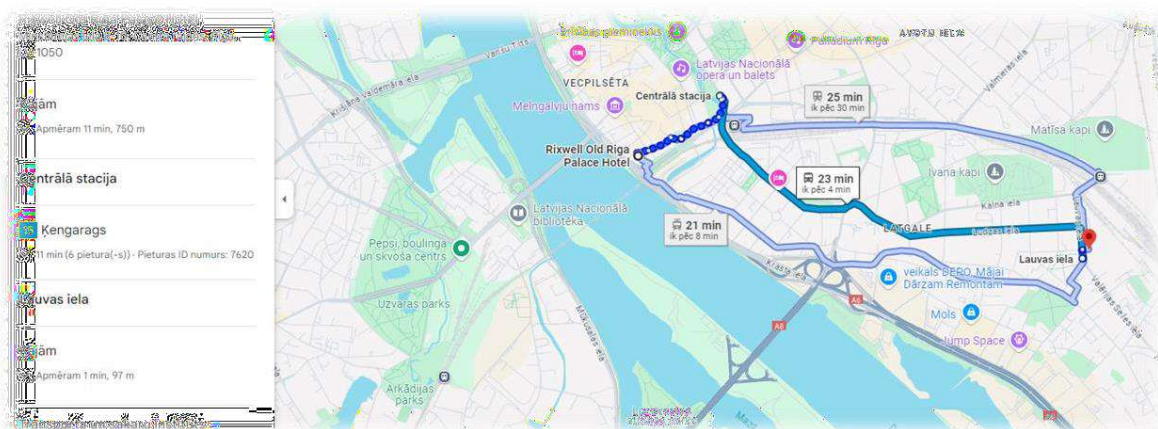
WELLTON CENTRUM HOTEL & SPA

1. Approximately 6 minutes on foot from the hotel to the trolley-bus stop
2. Take trolley-bus **No.15** to Kengarags at **Centrālā stacija** stop to get to **Lauvas iela** stop
3. You just need to cross the street and you will reach the venue. (Please see the map below).



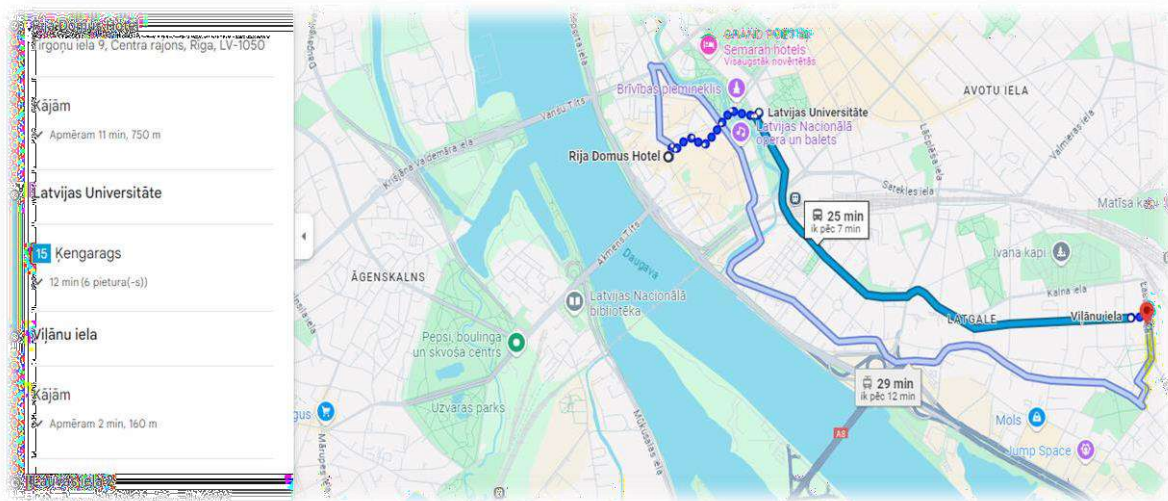
RIXWELL OLD RIGA PALACE HOTEL

1. Approximately 10 minutes on foot from the hotel to the trolley-bus stop
2. Take trolley-bus **No.15** to Kengarags at **Centrālā stacija** stop to get to **Lauvas iela** stop
3. You just need to cross the street and you will reach the venue. (Please see the map below)



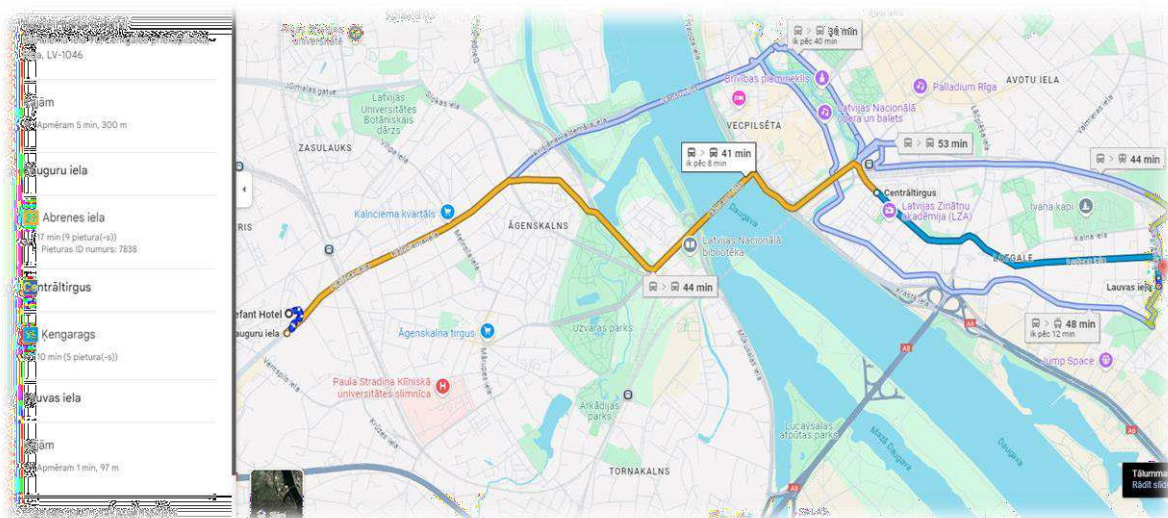
RIJA DOMUS HOTEL

1. Approximately 11 minutes on foot from the hotel to the trolley-bus stop
2. Take trolley-bus **No.15** to Kengarags at **Latvijas Universitāte** stop to get to **Lauvas iela** stop
3. You just need to cross the street and you will reach the venue. (Please see the map below)



RIXWELL ELEFANT HOTEL

1. Approximately 5 minutes on foot from the hotel to the bus stop
2. Approximately 41 minutes by public transport to TSI
3. Take bus **No.22** to Abrenes iela at **Kauguru iela** stop to get to **Centrāltirgus** stop and here change for trolley-bus **No.15** to Kengarags or bus **No.18** to Darzini to get to **Lauvas iela** stop
4. You just need to cross the street and you will reach the venue. (Please see the map below)











Rixwell Elephant Hotel is the closest to Riga International Airport!
10 min by car, 20 min by bus No. 22

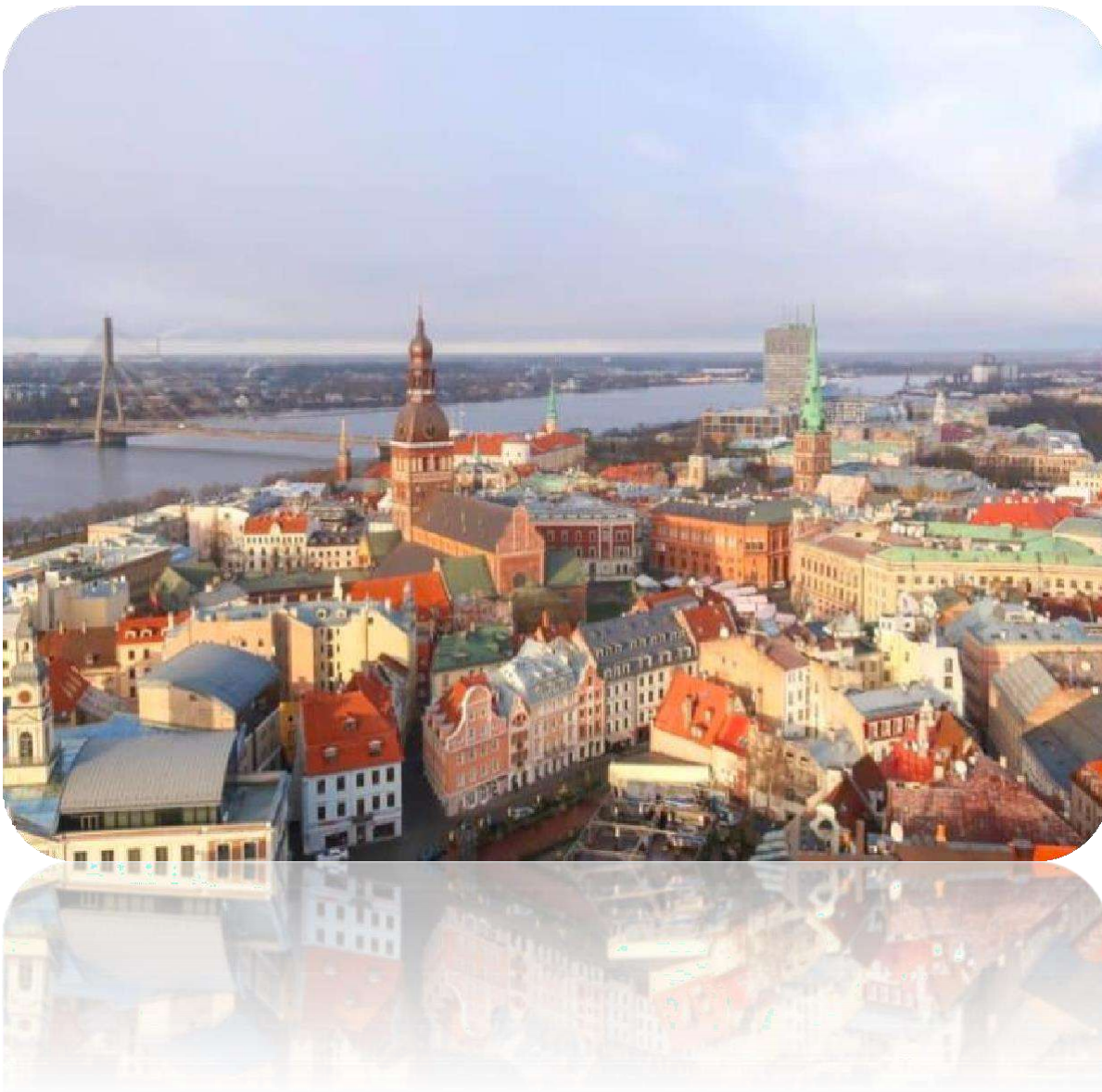
How to use public transport in Riga

Public transport routes and schedule: <https://saraksti.rigassatiksm.lv/index.html#riga/en>

Types and prices of tickets: <https://www.rigassatiksm.lv/en/tickets-and-e-ticket/>

Types and prices of tickets

 <p>One-month ticket Valid for one month from the first registration day.</p>	 <p>Ticket for a certain number of trips</p>
 <p>Time ticket Ticket for a certain period of time – 5, 3 days, as well as 24 hours</p>	 <p>Code ticket A method of payment, which allows to make payments for the trips with a smartphone in online mode.</p>
 <p>Proof of travelling in public transport</p>	 <p>Free travel in Riga public transport</p>
 <p>Prices of tickets in express buses</p>	 <p>Application form for a fare reduction</p>



<https://www.liveriga.com/en/>
<https://www.latvia.travel/en/city/riga>
<https://whc.unesco.org/en/list/852/>